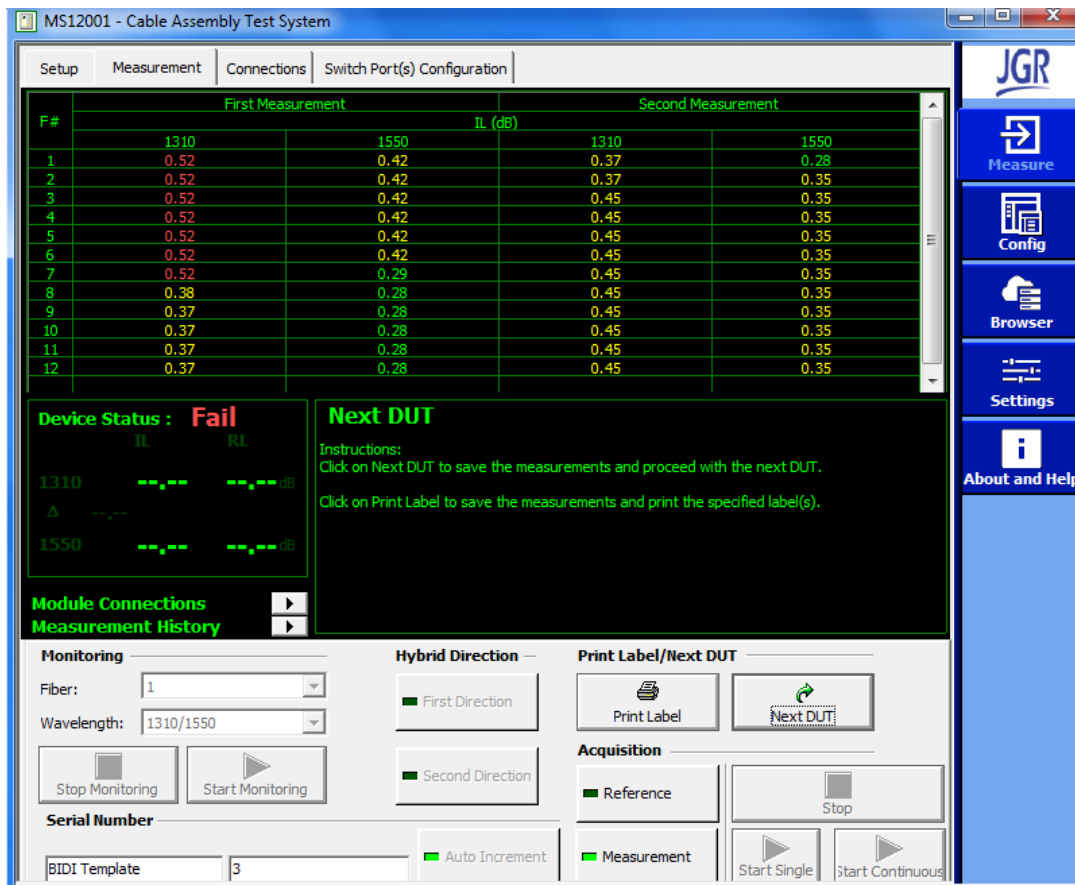


# Format MS12001 Data Like GMS

---

# Format MS12001 Data Like GMS

- This document will describe the process of changing the format of the data exported from MS12001 to the format of the GMS software.
- First you will need to complete your test as per your requirements. In this example it will be a Bidirectional 12 channel DUT.



# Format MS12001 Data Like GMS

- Using the filter builder in the “browser” tab, find the data set you would like to export. (any questions on this please contact JGR for a guide)
- Export to Excel and save it.

**MS12001 - Cable Assembly Test System**

**Filter Selection**

Filter: Bidi Template

Current filter created on: 27/11/2017 11:41:10 AM  
In a multi-user environment, you may have to click on the Refresh button to retrieve the most recent data. Use the filter to define or modify a filter you may use the Filter Builder.

**DUT/Test Information**

Incremental Serial Number	Fixed Serial Number	Test IL	Test Type	Number of Cables
1	BIDI Template	Yes	Bidirectional	1
2	Bidi Template	Yes	Bidirectional	1

**Save to Excel**

Desktop

Organize New folder

Favorites: Desktop, Downloads, Dropbox (JGR Op), Eric K, Office-1, office-3 (ms12)

Libraries: Documents

File name: test bidi

Save as type: Excel Workbook (\*.xlsx)

Save Cancel

**Fiber Measurements**

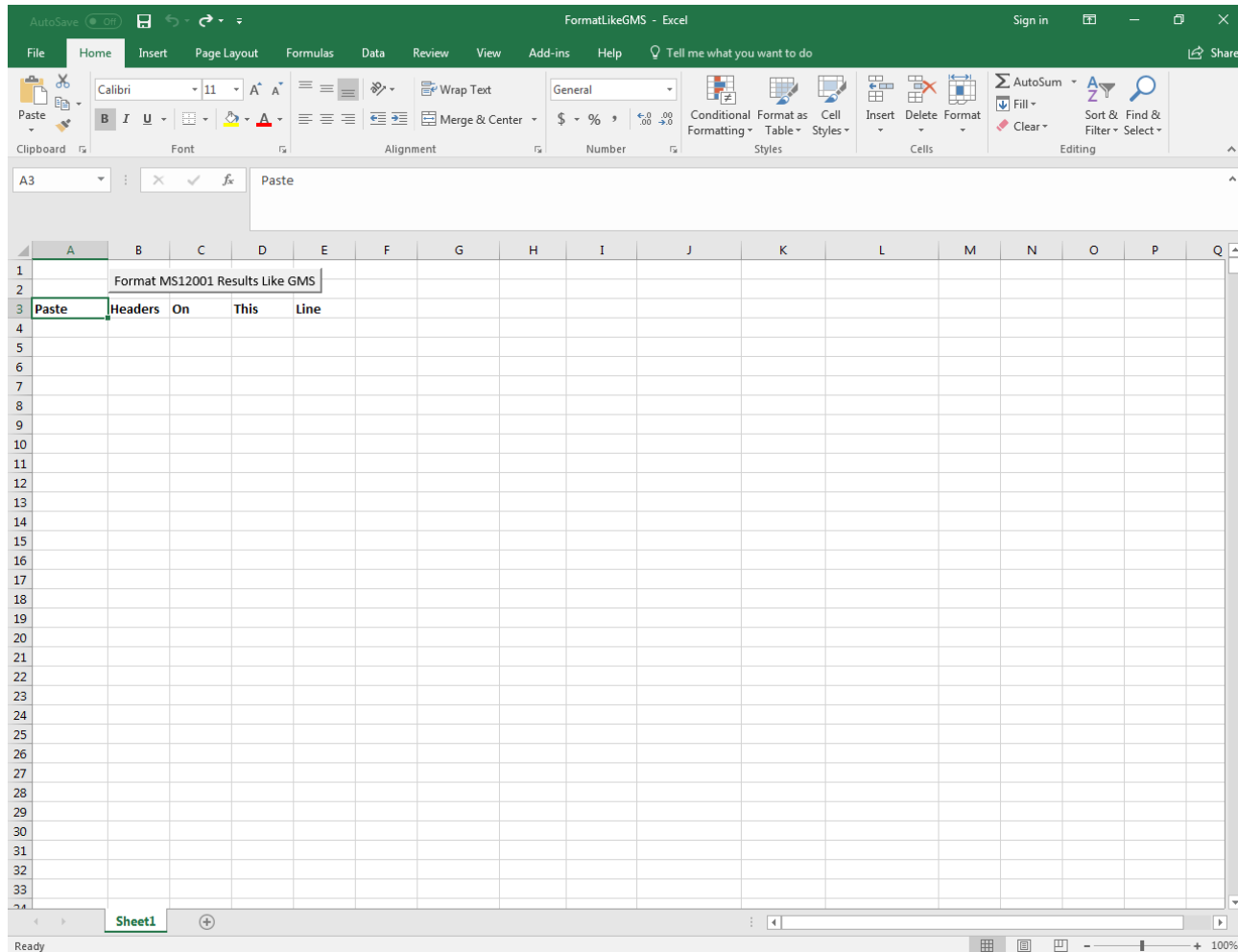
Fiber Number	IL	
	1310 nm	1550 nm
1		
2		
3		
4		
5		
6		
7		
8		
9	0.01	0.00
10	0.01	0.01
11	0.01	0.00
12	0.00	0.00

Ref. End B: 310 nm 1550

Filter Builder... Statistics... Refresh Export Labels... Reports...

# Format MS12001 Data Like GMS

- Open the Macro excel file named “FormatlikeGMS”.



# Format MS12001 Data Like GMS

- Open the workbook containing the data that was just exported.
- Highlight and copy all data you would like to change to the GMS format. (Including the headers)

test bidi - Excel

File Home Insert Page Layout Formulas Data Review View Add-ins Help Tell me what you want to do

Clipboard Font Alignment Number Styles Cells Editing

AutoSave On

Calibri 11 A A

B I U

General

Conditional Formatting Table Styles

Insert Delete Format

AutoSum Fill Clear Sort & Find & Filter Select

A1 Incremental Serial Number

	A	B	C	D	E	F	G	H	I	J	K	L	M	N	O	P	Q	R	S	T	U
	Incremental Serial Num	Fixed Ser	Test IL	Test Type	Number	c Wavelength	Fiber Num	IL	IL End A	IL End B	Ref.	Ref. End	Ref. End	DUT Leng	Ref. C	Ref. C Dis	ORL	Polarity			
1	01/01/1900 12:00:00 AM	BIDI Tem	Yes	Bidirectic	1	1310	1	0.01	0.15						-1						
2	01/01/1900 12:00:00 AM	BIDI Tem	Yes	Bidirectic	1	1550	1	0	0.11						-1						
3	01/01/1900 12:00:00 AM	BIDI Tem	Yes	Bidirectic	1	1310	2	0.01	0.15						-1						
4	01/01/1900 12:00:00 AM	BIDI Tem	Yes	Bidirectic	1	1550	2	0	0.11						-1						
5	01/01/1900 12:00:00 AM	BIDI Tem	Yes	Bidirectic	1	1310	3	0.01	0.15						-1						
6	01/01/1900 12:00:00 AM	BIDI Tem	Yes	Bidirectic	1	1550	3	0	0.11						-1						
7	01/01/1900 12:00:00 AM	BIDI Tem	Yes	Bidirectic	1	1310	4	0.01	0.15						-1						
8	01/01/1900 12:00:00 AM	BIDI Tem	Yes	Bidirectic	1	1550	4	0	0.11						-1						
9	01/01/1900 12:00:00 AM	BIDI Tem	Yes	Bidirectic	1	1310	5	0	0.15						-1						
10	01/01/1900 12:00:00 AM	BIDI Tem	Yes	Bidirectic	1	1550	5	0.01	0.11						-1						
11	01/01/1900 12:00:00 AM	BIDI Tem	Yes	Bidirectic	1	1310	6	0.01	0.15						-1						
12	01/01/1900 12:00:00 AM	BIDI Tem	Yes	Bidirectic	1	1550	6	0	0.11						-1						
13	01/01/1900 12:00:00 AM	BIDI Tem	Yes	Bidirectic	1	1310	7	0	0.15						-1						
14	01/01/1900 12:00:00 AM	BIDI Tem	Yes	Bidirectic	1	1550	7	0	0.11						-1						
15	01/01/1900 12:00:00 AM	BIDI Tem	Yes	Bidirectic	1	1310	8	0	0.15						-1						
16	01/01/1900 12:00:00 AM	BIDI Tem	Yes	Bidirectic	1	1550	8	0	0.11						-1						
17	01/01/1900 12:00:00 AM	BIDI Tem	Yes	Bidirectic	1	1310	9	0.01	0.15						-1						
18	01/01/1900 12:00:00 AM	BIDI Tem	Yes	Bidirectic	1	1550	9	0	0.11						-1						
19	01/01/1900 12:00:00 AM	BIDI Tem	Yes	Bidirectic	1	1310	10	0.01	0.15						-1						
20	01/01/1900 12:00:00 AM	BIDI Tem	Yes	Bidirectic	1	1550	10	0.01	0.11						-1						
21	01/01/1900 12:00:00 AM	BIDI Tem	Yes	Bidirectic	1	1310	11	0.01	0.15						-1						
22	01/01/1900 12:00:00 AM	BIDI Tem	Yes	Bidirectic	1	1550	11	0	0.11						-1						
23	01/01/1900 12:00:00 AM	BIDI Tem	Yes	Bidirectic	1	1310	12	0	0.15						-1						
24	01/01/1900 12:00:00 AM	BIDI Tem	Yes	Bidirectic	1	1550	12	0	0.11						-1						
25	01/02/1900 12:00:00 AM	Bidi Tem	Yes	Bidirectic	1	1310	1	0.47	0.47						-1						
26	01/02/1900 12:00:00 AM	Bidi Tem	Yes	Bidirectic	1	1550	1	0.38	0.38						-1						
27	01/02/1900 12:00:00 AM	Bidi Tem	Yes	Bidirectic	1	1310	2	0.47	0.47						-1						
28	01/02/1900 12:00:00 AM	Bidi Tem	Yes	Bidirectic	1	1550	2	0.38	0.38						-1						
29	01/02/1900 12:00:00 AM	Bidi Tem	Yes	Bidirectic	1	1310	3	0.47	0.47						-1						
30	01/02/1900 12:00:00 AM	Bidi Tem	Yes	Bidirectic	1	1550	3	0.38	0.4						-1						
31	01/02/1900 12:00:00 AM	Bidi Tem	Yes	Bidirectic	1	1310	4	0.47	0.49						-1						
32	01/02/1900 12:00:00 AM	Bidi Tem	Yes	Bidirectic	1	1550	4	0.38	0.4						-1						
33	01/02/1900 12:00:00 AM	Bidi Tem	Yes	Bidirectic	1	1310	5	0.48	0.5						-1						
34	01/02/1900 12:00:00 AM	Bidi Tem	Yes	Bidirectic	1	1550	5	0.38	0.4						-1						
35	01/02/1900 12:00:00 AM	Bidi Tem	Yes	Bidirectic	1	1310	6	0.47	0.49						-1						
36	01/02/1900 12:00:00 AM	Bidi Tem	Yes	Bidirectic	1	1550	6	0.38	0.4						-1						
37	01/02/1900 12:00:00 AM	Bidi Tem	Yes	Bidirectic	1	1310	7	0.47	0.49						-1						
38	01/02/1900 12:00:00 AM	Bidi Tem	Yes	Bidirectic	1	1550	7	0.38	0.4						-1						
39	01/02/1900 12:00:00 AM	Bidi Tem	Yes	Bidirectic	1	1310	8	0.48	0.49						-1						

Dut Information Sheet1

# Format MS12001 Data Like GMS

- Paste all of the data into the Macro excel file where it says “Paste”. (Cell “A3”)  
(It will look like the below example)

AutoSave (on) | File | Home | Insert | Page Layout | Formulas | Data | Review | View | Add-ins | Help | Tell me what you want to do | Share

Clipboard | Font | Alignment | Number | Styles | Cells | Editing

A3 | Incremental Serial Number

	A	B	C	D	E	F	G	H	I	J	K	L	M	N	O	P	Q
1																	
2																	
3	Incremental	Fixed Seri	Test IL	Test Type	Number o	Waveleng	Fiber Numbe	IL	IL End A	IL End B	Refl.	Refl. End A	Refl. End B	DUT Leng	Refl C	Refl C Dist	ORL
4	#####	BIDI Temp	Yes	Bidirectio	1	1310	1	0.01	0.15						-1		
5	#####	BIDI Temp	Yes	Bidirectio	1	1550	1	0	0.11						-1		
6	#####	BIDI Temp	Yes	Bidirectio	1	1310	2	0.01	0.15						-1		
7	#####	BIDI Temp	Yes	Bidirectio	1	1550	2	0	0.11						-1		
8	#####	BIDI Temp	Yes	Bidirectio	1	1310	3	0.01	0.15						-1		
9	#####	BIDI Temp	Yes	Bidirectio	1	1550	3	0	0.11						-1		
10	#####	BIDI Temp	Yes	Bidirectio	1	1310	4	0.01	0.15						-1		
11	#####	BIDI Temp	Yes	Bidirectio	1	1550	4	0	0.11						-1		
12	#####	BIDI Temp	Yes	Bidirectio	1	1310	5	0	0.15						-1		
13	#####	BIDI Temp	Yes	Bidirectio	1	1550	5	0.01	0.11						-1		
14	#####	BIDI Temp	Yes	Bidirectio	1	1310	6	0.01	0.15						-1		
15	#####	BIDI Temp	Yes	Bidirectio	1	1550	6	0	0.11						-1		
16	#####	BIDI Temp	Yes	Bidirectio	1	1310	7	0	0.15						-1		
17	#####	BIDI Temp	Yes	Bidirectio	1	1550	7	0	0.11						-1		
18	#####	BIDI Temp	Yes	Bidirectio	1	1310	8	0	0.15						-1		
19	#####	BIDI Temp	Yes	Bidirectio	1	1550	8	0	0.11						-1		
20	#####	BIDI Temp	Yes	Bidirectio	1	1310	9	0.01	0.15						-1		
21	#####	BIDI Temp	Yes	Bidirectio	1	1550	9	0	0.11						-1		
22	#####	BIDI Temp	Yes	Bidirectio	1	1310	10	0.01	0.15						-1		
23	#####	BIDI Temp	Yes	Bidirectio	1	1550	10	0.01	0.11						-1		
24	#####	BIDI Temp	Yes	Bidirectio	1	1310	11	0.01	0.15						-1		
25	#####	BIDI Temp	Yes	Bidirectio	1	1550	11	0	0.11						-1		
26	#####	BIDI Temp	Yes	Bidirectio	1	1310	12	0	0.15						-1		
27	#####	BIDI Temp	Yes	Bidirectio	1	1550	12	0	0.11						-1		
28	#####	Bidi Temp	Yes	Bidirectio	1	1310	1	0.47	0.47						-1		
29	#####	Bidi Temp	Yes	Bidirectio	1	1550	1	0.38	0.38						-1		
30	#####	Bidi Temp	Yes	Bidirectio	1	1310	2	0.47	0.47						-1		
31	#####	Bidi Temp	Yes	Bidirectio	1	1550	2	0.38	0.38						-1		
32	#####	Bidi Temp	Yes	Bidirectio	1	1310	3	0.47	0.47						-1		
33	#####	Bidi Temp	Yes	Bidirectio	1	1550	3	0.38	0.4						-1		
34	#####	Bidi Temp	Yes	Bidirectio	1	1310	4	0.47	0.40						-1		

Sheet1

# Format MS12001 Data Like GMS

- Click the “Format MS12001 Results like GMS” button.
- This will generate a completely new excel file that is now formatted like GMS.

	A	B	C	D	E	F	G	H	I	J	K	L	M
1	Fiber Num	IL End A@1310	IL End A@1550	IL End B@1310	IL End B@1550	Incremental Serial Number	Fixed Serial Number	Test IL	Test Type	Number of Cables			
2	1	0.01	0	0.15	0.11	1 BIDI Template	Yes	Bidirectional		1			
3	2	0.01	0	0.15	0.11	1 BIDI Template	Yes	Bidirectional		1			
4	3	0.01	0	0.15	0.11	1 BIDI Template	Yes	Bidirectional		1			
5	4	0.01	0	0.15	0.11	1 BIDI Template	Yes	Bidirectional		1			
6	5	0	0.01	0.15	0.11	1 BIDI Template	Yes	Bidirectional		1			
7	6	0.01	0	0.15	0.11	1 BIDI Template	Yes	Bidirectional		1			
8	7	0	0	0.15	0.11	1 BIDI Template	Yes	Bidirectional		1			
9	8	0	0	0.15	0.11	1 BIDI Template	Yes	Bidirectional		1			
10	9	0.01	0	0.15	0.11	1 BIDI Template	Yes	Bidirectional		1			
11	10	0.01	0.01	0.15	0.11	1 BIDI Template	Yes	Bidirectional		1			
12	11	0.01	0	0.15	0.11	1 BIDI Template	Yes	Bidirectional		1			
13	12	0	0	0.15	0.11	1 BIDI Template	Yes	Bidirectional		1			
14	1	0.47	0.38	0.47	0.38	2 Bidi Template	Yes	Bidirectional		1			
15	2	0.47	0.38	0.47	0.38	2 Bidi Template	Yes	Bidirectional		1			
16	3	0.47	0.38	0.47	0.4	2 Bidi Template	Yes	Bidirectional		1			
17	4	0.47	0.38	0.49	0.4	2 Bidi Template	Yes	Bidirectional		1			
18	5	0.48	0.38	0.5	0.4	2 Bidi Template	Yes	Bidirectional		1			
19	6	0.47	0.38	0.49	0.4	2 Bidi Template	Yes	Bidirectional		1			
20	7	0.47	0.38	0.49	0.4	2 Bidi Template	Yes	Bidirectional		1			
21	8	0.48	0.38	0.49	0.43	2 Bidi Template	Yes	Bidirectional		1			
22	9	0.47	0.38	0.54	0.44	2 Bidi Template	Yes	Bidirectional		1			
23	10	0.47	0.38	0.54	0.45	2 Bidi Template	Yes	Bidirectional		1			
24	11	0.47	0.38	0.54	0.44	2 Bidi Template	Yes	Bidirectional		1			
25	12	0.47	0.38	0.54	0.45	2 Bidi Template	Yes	Bidirectional		1			
26													
27													
28													
29													
30													
31													
32													
33													
34													