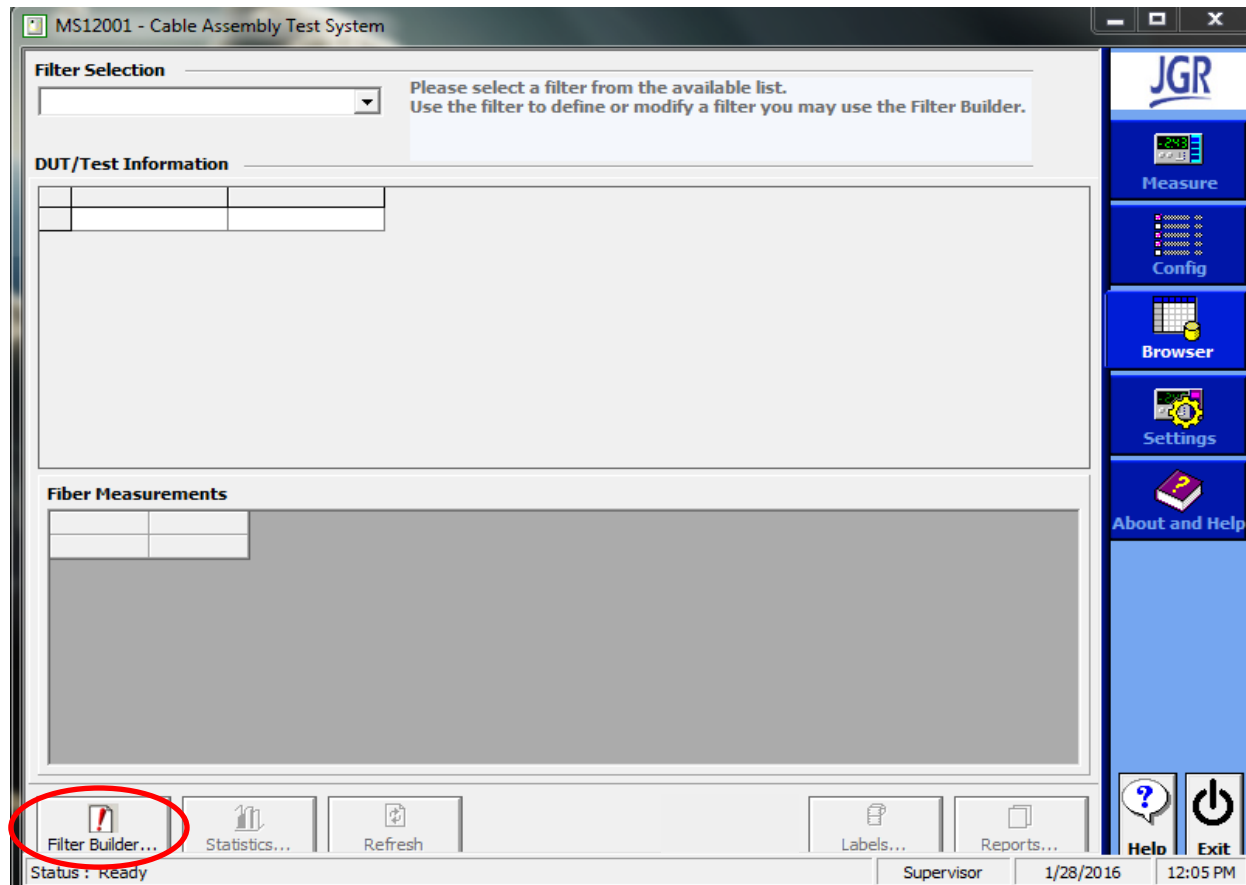


Viewing MS12001 Data

Viewing MS12001 Data

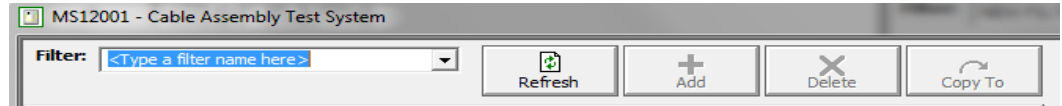
How to create a filter in the 'Browser' tab:

- In Supervisor mode, go to the 'Browser' tab.
- You will see the screen below. We need to build filters in order to see any data.
- This is done by clicking on the 'Filter Builder'.



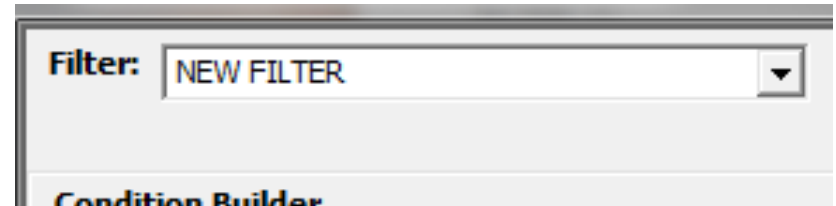
Viewing MS12001 Data

- In the filter builder click 'Add' to start a new filter. Name you filter something useful.

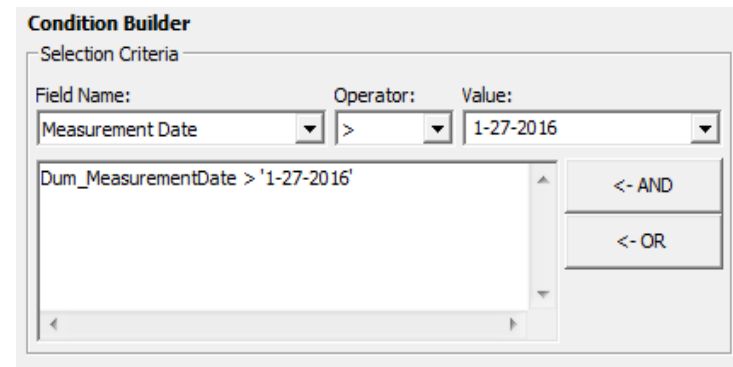


- We must then set up several items:

- Filter name
- Selection criteria
- Fields you wish to display
- How the data is to be sorted



- Now choose the data you want to display:
 - For this example assume todays date is 1-28-2016. I want to show *all* of the data from *today*.
 - Under 'Field Name' select 'Measurement date'
 - Under 'Operator' choose '>'

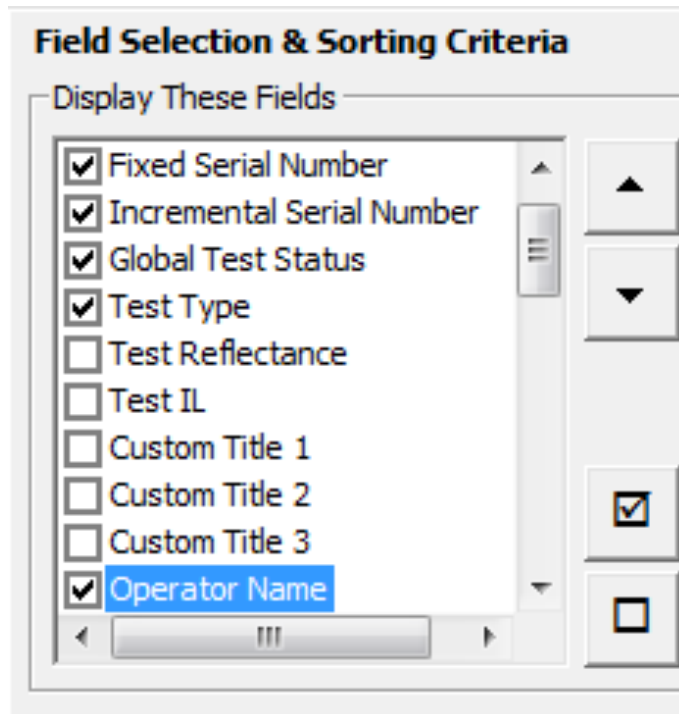


- Under 'Value' we must put yesterdays date (1-27-2016 in this case) in the form **mm-dd-yyyy**
- Click 'And' to add this criteria

Viewing MS12001 Data

Under the 'Field Selection' you choose which fields are shown in addition to the IL/RL data for each measurement:

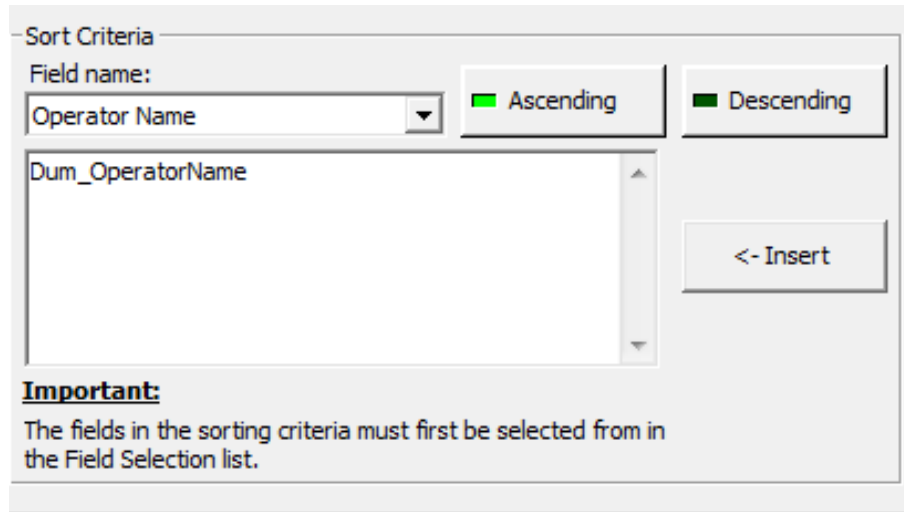
- Here I would like to show the *date the measurement* was taken, the *Serial Number*, the *test status* (Pass/fail/warning) and what *type of test* was performed.
- Note we have also select 'Operator Name' because we want to use this as our sorting criteria.



Viewing MS12001 Data

Finally we must select a way of sorting the data. Here I would like to sort by the name of the operator. (*Note, this is why we selected 'Operator Name' in the Field Selection list.*):

- Select 'Operator Name' from the dropdown and click 'Insert'



Sort Criteria

Field name:

Operator Name

Ascending

Descending

Dum_OperatorName

<- Insert

Important:

The fields in the sorting criteria must first be selected from in the Field Selection list.

- The filter is now complete. Click 'Apply' and answer 'Yes' to the question which appears.
- Click 'Close' to return to the Browser.

Viewing MS12001 Data

- Select your filter from the 'Filter Selection' dropdown.
- Any data which meets the filter criteria will be displayed in the DUT/Test Information panel. Here one measurement was made *today* (1-28-2016). Selecting this measurement will display the results in the 'Fiber Measurements' window.

The screenshot shows the MS12001 - Cable Assembly Test System software interface. The window title is "MS12001 - Cable Assembly Test System".

Filter Selection: A dropdown menu shows "NEW FILTER". To the right, a message states: "Current filter created on: 1/28/2016 12:26:32 PM. In a multi-user environment, you may have to click on the Refresh button to retrieve the most recent data. Use the filter to define or modify a filter you may use the Filter Builder."

DUT/Test Information: A table displays test data:

Measurement Date	Fixed Serial Number	Incremental Serial Number	Global Test Status	Test Type	Operator Name
1/28/2016 9:49:40 AM	12412	1	Passed	One connector A	

Fiber Measurements: A table displays measurement results for Fiber Number 1:

Fiber Number	IL		IL End A		IL End B		Refl.		Refl. End A		Refl. End B	
	850 nm	1300 nm	850 nm	1300 nm	850 nm	1300 nm	850 nm	1300 nm	850 nm	1300 nm	850 nm	1300 nm
1			0.030	0.060					-53.00	-55.57		

The right sidebar contains buttons for Measure, Config, Browser, Settings, and About and Help. The bottom toolbar includes Filter Builder..., Statistics..., Refresh, Labels..., and Reports... buttons.

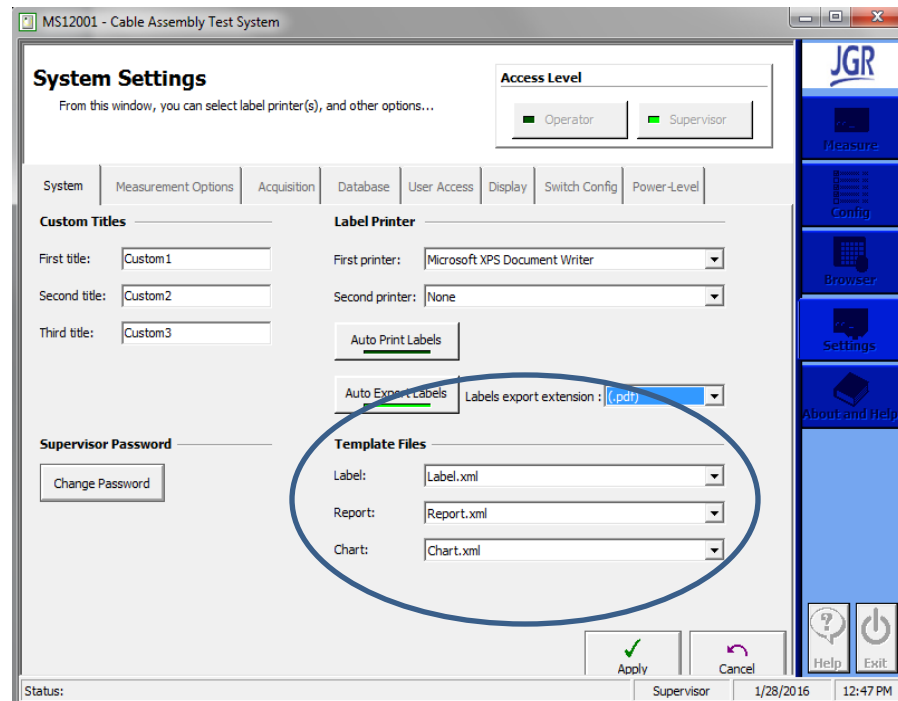
Viewing MS12001 Data

This data may be exported as a Report, or individual data may be exported as a Label.

MS12001 comes with several pre-defined Label and Report templates.

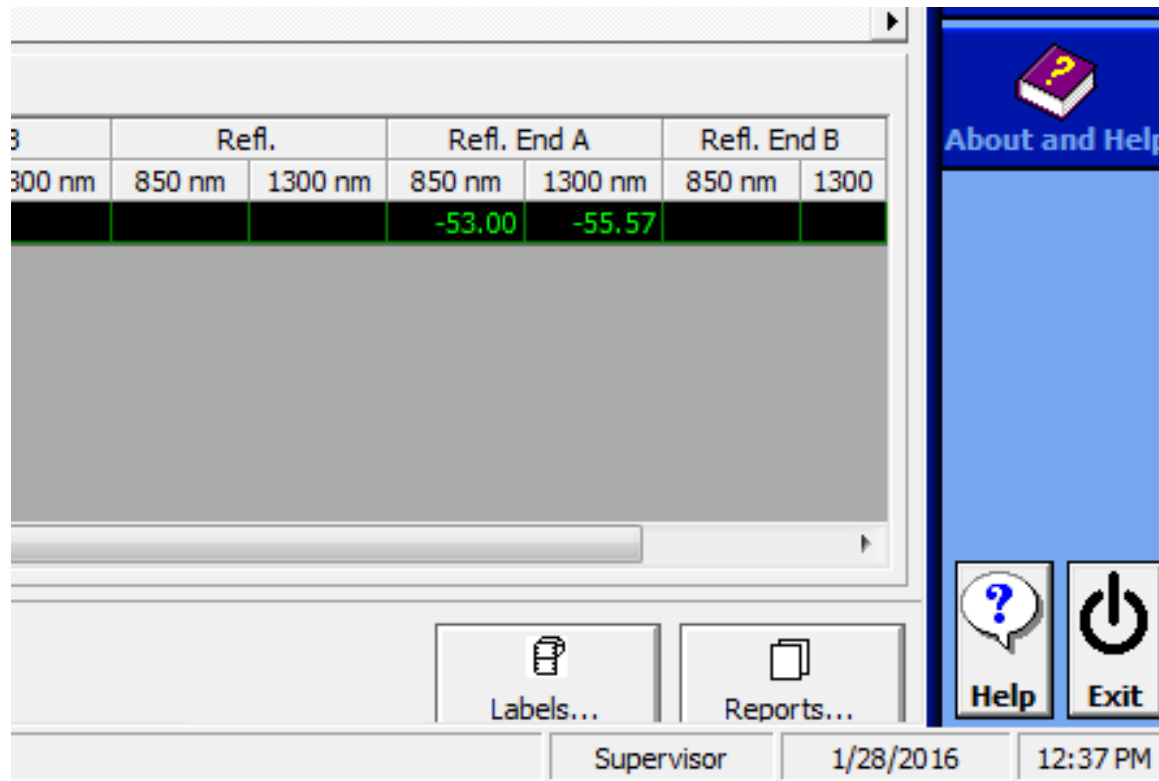
- They can be selected from the 'Settings' -> 'System' tab.
- Under 'Template Files', any template which exists in the folder *C:\ProgramData\JGR\MS12001\Templates* can be selected.

- Here it is also possible to have Labels exported automatically.
- If this option is selected clicking 'Next DUT' when performing a measurement will save a .txt or .pdf label file to:
C:\Users\myUser\Documents



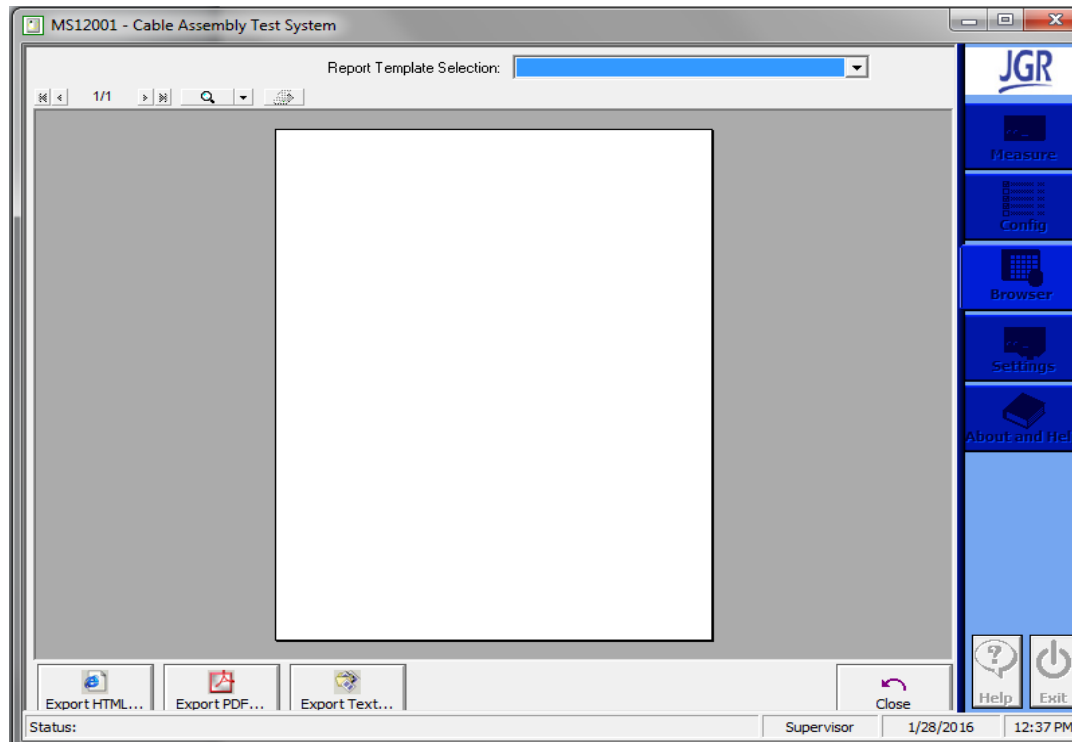
Viewing MS12001 Data

- The results shown in the filter may be exported as a report or label using the Templates selected in step 14.
- In the lower right of the screen click 'Reports'.



Viewing MS12001 Data

- This will bring up the blank reports window. You may now select a specific report based on the template selected on the previous page. There are several pre-defined ones to choose from and these can be edited and configured as desired using a separate program (VSView) which is provided with the MS12001 software installation files. *(Please see the tutorial on 'Editing Report Templates' for further details.)*



Viewing MS12001 Data

- Selecting 'Tabular Report Standard' will put the data into a report as shown.
- This can now be saved as a .pdf or .txt file.

The screenshot displays the 'MS12001 - Cable Assembly Test System' window. At the top, the 'Report Template Selection' dropdown is set to 'Tabular report Standard'. The main area shows a 'Test report' with the following details:

- Printed on: 1/28/2016 12:41:05 PM
- Tested On: LENOVO-THINK
- Seller Order A
- Test type: One connector A
- Fiber type: Multimode OM3
- Tested By:

Test number	Serial number	Status	Fiber	Wave.	Limit A	Limit B	IL A	Limit A	Limit B	IL B	Limit A	Limit B
12410-1		Passed	1	850nm	0.4	0.5	0.02	-25	-22.0	-25	na	na
12410-1		Passed	1	1200nm	0.4	0.5	0.06	-25	-22.6	-25	na	na

At the bottom, there are buttons for 'Export HTML...', 'Export PDF...', and 'Export Text...'. The status bar at the very bottom shows 'Status:', 'Supervisor', '1/28/2016', and '12:41 PM'.

Viewing MS12001 Data (Advanced Filter Building)

- Once again go to the Browser window and open the 'Filter Builder'.
- Create a new filter by selecting 'Create a new query' from the dropdown and typing in an appropriate name.
- I want to build a filter which selects all results with a particular serial number.
Note the 'Fixed Serial Number' is exactly that, the part of the serial number in the 'Measurements' screen which is not automatically incremented.
- Fill out the form as shown and then click 'And' to add the criteria.
- Lets say I *also* want to screen for only FAILED tests.
Select 'Global Test Status' '=' and then 'Failed' under Value.
Click 'And' so that both of these criteria must be satisfied.

Condition Builder

Selection Criteria

Field Name:	Operator:	Value:
Fixed Serial Number	=	12345

<- AND
<- OR

Condition Builder

Selection Criteria

Field Name:	Operator:	Value:
Global Test Status	=	Failed
Dum_FixSerialNr	=	12345

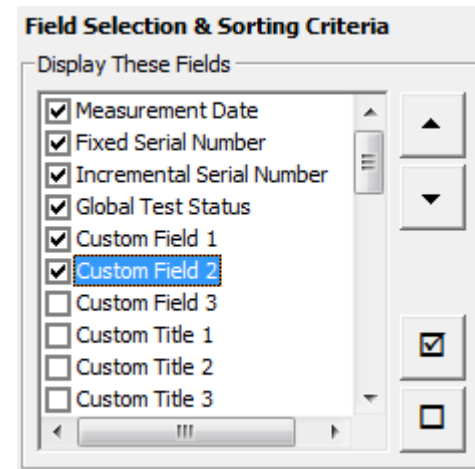
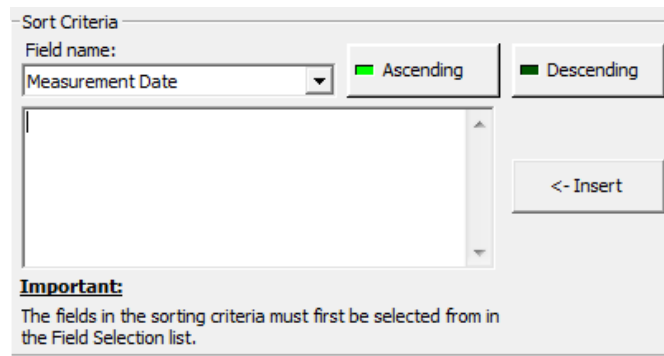
<- AND
<- OR

Viewing MS12001 Data (Advanced Filter Building)

- Continue on and select all of the fields you wish to display including Measurement Date.
- Now we will sort the data by Measurement Date. Select 'Measurement Date' from the dropdown and click 'Insert'.

Finally click 'Apply', answer the questions and then click 'Close'.

- These filters will be available permanently unless you choose to delete or modify them.



- To delete a filter simply select it in the 'Filter Builder' and press 'Delete'.

